

MAXIMUM TORQUE



Colour	Product Code	Pack Size	Box Qty
White	MAXTQWE	300ml	12
Black	MAXTQBK	300ml	12

Product Description

MAXIMUM TORQUE, based on next generation hybrid/PA polymer technology is **THE** ultimate high grab building adhesive.

The unique polymer blend used in MAXIMUM TORQUE gives incredible initial grab, typically double that of most grab adhesives on the market today, eliminating the need for temporary support in most applications.

MAXIMUM TORQUE has the ability to bond basically EVERYTHING to ANYTHING in virtually all conditions, even under water or in the rain. MAXIMUM TORQUE cures to a tough flexible elastic rubber, which also makes it suitable for use as a sealant.

Benefits

- Incredible initial grab. Double that of most common grab adhesives.
- High ultimate bonding strength.
- Interior and Exterior Use.
- Can be applied to damp/wet Surfaces.
- Totally Waterproof & Weatherproof.
- Quick Curing.
- Overpaintable if required.
- Solvent Free odour less formula.
- Resistant to temperature extremes -40°C to +150°C.
- Permanently Flexible +/- 12.5% movement accommodation.
- Resistant to Chemicals & Petrol (10% dilute acids/alkalis, most solvents).
- Excellent primer less adhesion to most surfaces, including metals, most plastics, glass, concrete, plaster, plasterboard, polyester, Perspex, glass, wood, enamel, painted surfaces etc etc.

Areas For Use

Bonding in almost every application imaginable, both internally and externally. The following are just some examples:

- Bonding Brick Slips
- As a high quality nail replacement adhesive, even to damp surfaces.
- External and internal perimeter pointing around doors and windows, especially in mobile structures such as caravans and boats.
- Bonding mirrors to most common substrates.

- Automotive gap filling and sealing.
- Jointing cladding panels.
- Bonding difficult materials such as specialised polymer systems, metals and fiberglass.
- Any application requiring high performance, durable sealing and bonding of joints.

Limitations

- Use on overhead applications – Always use in conjunction with mechanical fixings.
- Use in conjunction with mechanical fixings for large mirrors (>1m² total area).
- Temporary support is not normally required, however for extremely heavy items; provide temporary support until adhesive has dried.
- Note: Product is by its nature stiff to gun. Always discharge using a good quality sealant gun (eg EVERBUILD POWER PRO).
- Do not seal mirror edges/plastic sheeting until adhesive has cured.
- Do not use on surfaces that bleed oils or plasticizers.
- Bonding glass blocks: always check with manufacturer of blocks re; suitability for use before assembly as this is a structural application and their specified methods must be followed.
- **Overpaintability: As quality and type of paint can vary, always test compatibility before use.**
- Do not use on polythene safety backed mirrors, polypropylene or Teflon.
- Using on stone: as quality of natural stone can vary, always test for staining resistance/compatibility prior to full scale use. If in doubt use Hybriflex NS.
- Use as a sealant; do not use in applications where movement is greater than +/- 12.5%.
- It is the user's responsibility to determine suitability for use. Adhesion trials recommended before large scale application. If in doubt, please contact Technical Services Department for advice.
- Yellowing can occur in the dark.

Surface Preparation

All surfaces must be clean, sound and dust free.

Application

All surfaces to be sealed must be sound and clean. MAXIMUM TORQUE comes complete with a pre-cut V notched nozzle which ensures correct depth of adhesive is discharged from tube. Cut the tip of the cartridge, taking care not to damage the thread. Screw on nozzle and apply using a good quality sealant gun holding the gun at 90 degrees to the surface to be bonded. Apply adhesive direct to back of one surface only, in lines spaced at 30-40mm centres. Immediately place item into position and secure with good, even pressure and with a slight twist action.

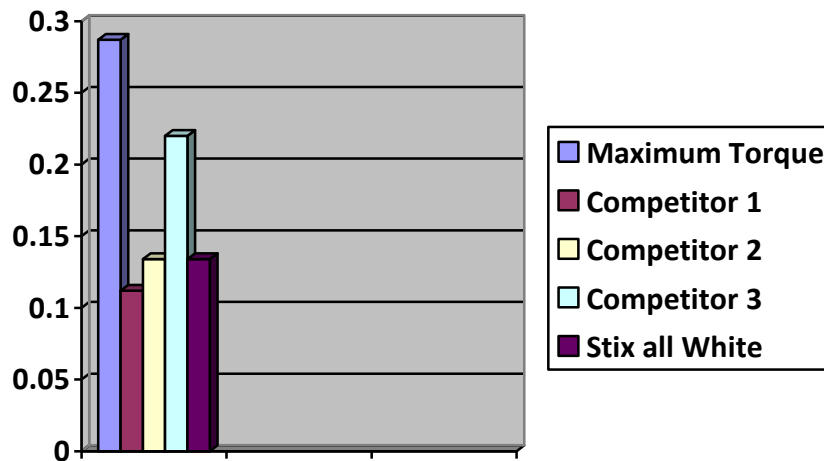
NOTE: MAXIMUM TORQUE will skin over within approximately 15-30 minutes. Through cure will be approximately 2mm in depth per 24 hours. This may be slower on non porous surfaces.

Specific Data

Consistency	Pasty
Density	1.25-1.35
Application Temperature	5 to 35°C
Skin Formation at 23°C and 50% RH	20 ± 10 min
Sagging (ISO 7390)	Nil
Curing at 23°C and 50% RH	> 3mm / 24hr
Shore A Hardness (ISO 868 – 3 seconds)	50-55
Modulus at 100% Elongation	Ca. 1.3 MPa
Elongation @ Break	> 300%
Tensile Strength at break	> 2.5 Mpa
Shrinkage (ISO 10563)	< 4%
Compatibility With Paints	Water based: yes (test compatibility) Solvent based: no (with alkyd paints)
Temperature Resistance	-40 to +150°C
Movement Accommodation	± 12.5%
Coverage	As an adhesive – Approx. 1.5m ² when applied as directed.

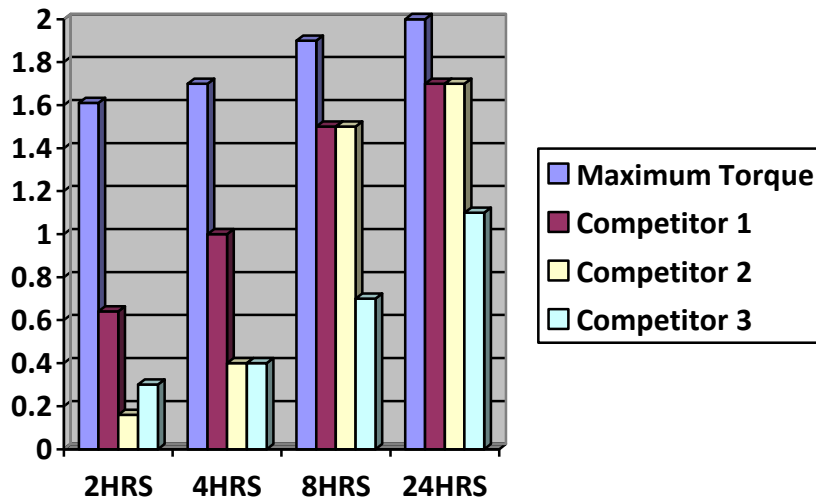
Performance data

1. COMPARISON OF INITIAL GRAB (N/mm²)



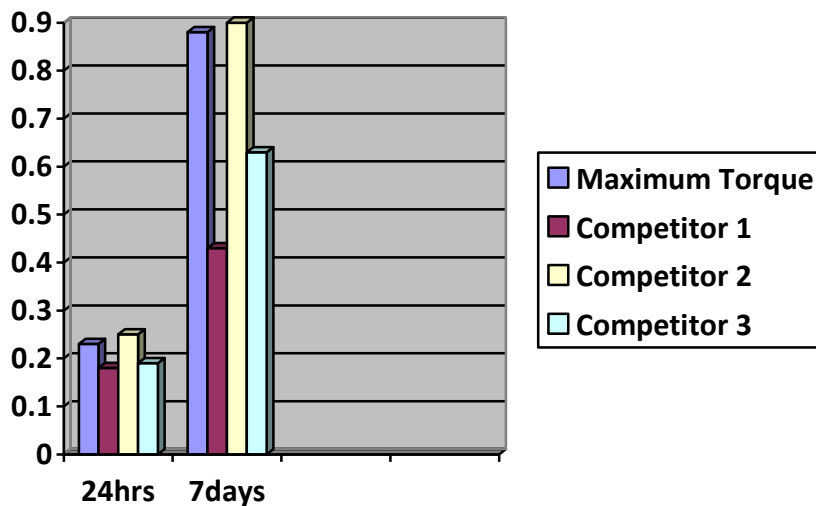
Maximum torque shows the best initial grab of all samples/types tested, nearly double most other products!

2. COMPARISON OF BOND STRENGTH WOOD/WOOD



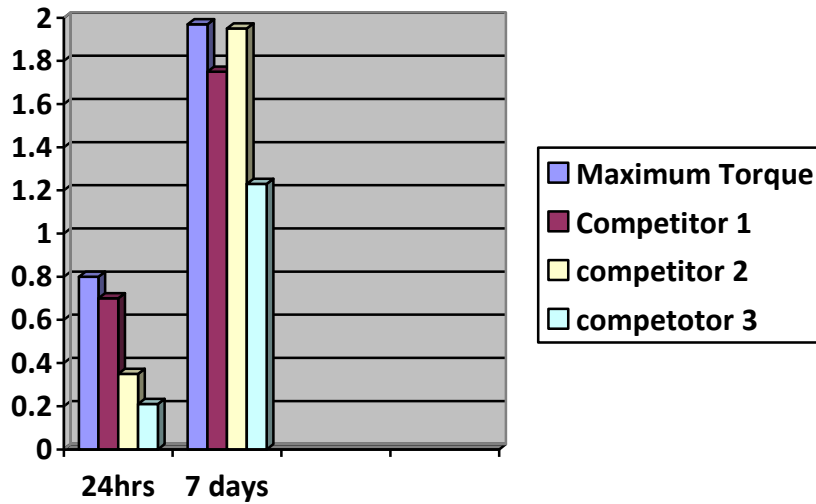
Maximum Torque out performs all products tested in terms of strength build up and ultimate strength for bonding wood to wood.

3. COMPARISON OF BOND STRENGTH PVC/PVC

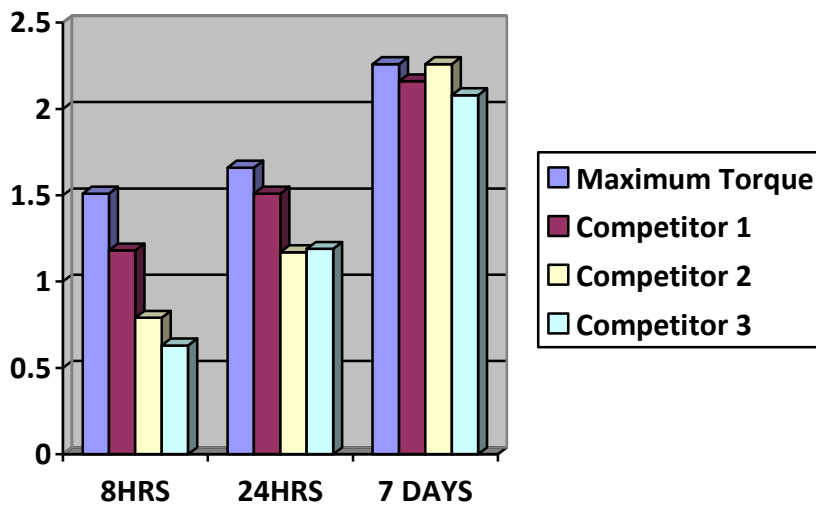


Maximum Torque shows significant bond strength gains PVC/PVC

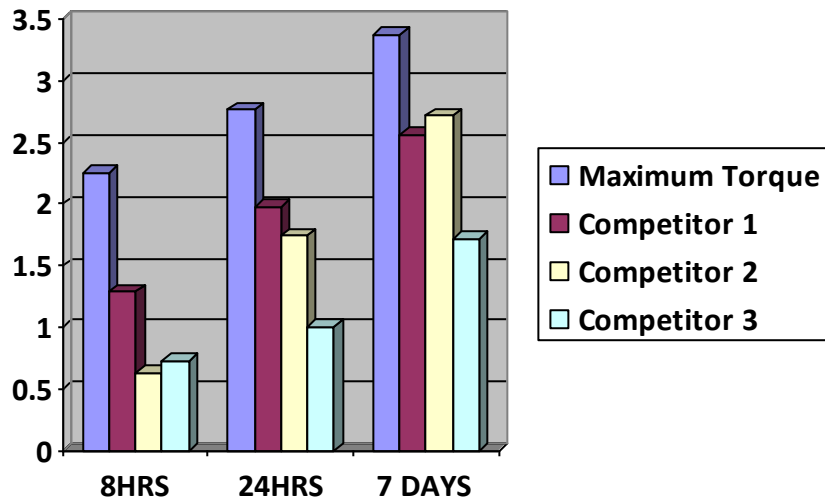
4. COMPARISON OF BOND STRENGTH ALUMINIUM to ALUMINIUM



5. COMPARISON OF BOND STRENGTH WOOD/PVC



5. COMPARISON OF BOND STRENGTH WOOD/ALUMINIUM



Health & Safety

Consult MSDS for full list of hazards.

Storage

Store in cool dry conditions between + 5°C and 25°C.

Shelf Life

12 months in original unopened containers.

The technical data contained herein is based on our present knowledge and experience and we cannot be held liable for any errors, inaccuracies, omissions or editorial failings that result from technological changes or research between the date of issue of this document and the date the product is acquired. Before using the product, the user should carry out any necessary tests in order to ensure that the product is suitable for the intended application. Moreover, all users should contact the seller or the manufacturer of the product for additional technical information concerning its use if they think that the information in their possession needs to be clarified in any way, whether for normal use or a specific application of our product. Our guarantee applies within the context of the statutory regulations and provisions in force, current professional standards and in accordance with the stipulations set out in our general sales conditions. The information detailed in the present technical data sheet is given by way of indication and is not exhaustive. The same applies to any information provided verbally by telephone to any prospective or existing customer.